



Waukegan Public Schools

Fall 2020 Planning



Objective

To provide an overview of the fall plan for WPS60 that keeps employees and students healthy and safe in an equitable learning environment for all





WPS60 Plan for Fall 2020

Focus Areas

- Health & Safety
- Hybrid Schedules
- Blended Learning
- Social Emotional Learning
- Equity
- Facility Readiness
- Addressing and Closing Learning Gaps
- Financial Considerations
- Professional Learning
- Community Engagement





How Did We Get Here - *Academics*

- Transitioned from printed learning packets to *eLearning* opportunities for students
- Developed a Remote Learning platform for all grade levels through a collaboration across all departments
- Provided opportunities for Professional Development throughout the Spring and Summer
- Offered remote learning tutorials for parents



How Did We Get Here - *Academics (cont.)*

- Distributed more than 4,500 Chromebooks from schools to elementary students for use in Remote Learning
- Ordered additional Chromebooks to further support our efforts
- Ordered and distributed Hot Spots to provide internet service to students who lacked it at home
- Worked across divisions to develop a plan to regularly contact and support families and students
- Mental health assistance was made available to students through tele-therapy



How Did We Get Here - *Academics (cont.)*

- Transitioned to Summer Remote Learning
 - Schedules
 - Credit Bearing
- School supplies ordered and distributed for Summer Remote Program
- Learning materials ordered and distributed for Summer Remote Program



How Did We Get Here - *Operations*

- Established a robust breakfast and lunch service program at 117 locations, twice a week, surpassing 650,000 total meals served
- Applied for, and received, \$25,000 relief grant from *No Kid Hungry* to assist with child nutrition operations
- Implemented enhanced cleaning and sanitation measures at all District buildings
- Maintained capital building improvement schedule for pre-approved renovation and construction projects in our schools
- Implement employee Wellness Screening processes with the District Health Services Coordinator





How Did We Get Here - *Operations (cont.)*

- Assisted with the distribution of Chromebooks and print version learning materials
- Supported the distribution of materials for summer school
- Worked with schools to refund parents for fees associated with field trips, school activities, and activity fees
- Maintained the District budget committee process to prepare 2020-2021 budget
- Virtually recruited certified and non-certified staff candidates
- Worked to celebrate all 2020 District retirees





How Did We Get Here - *Operations (cont.)*

- Received \$10M line of credit to assist with future financial needs
- Ensure the District has available cash on hand to support ongoing initiatives
- Maintain employee support measures through employment verification, tuition reimbursement for completed coursework, and verification for loan forgiveness



What Can We Expect?

The COVID Slide

Research has Concerning Projections about Prolonged Absence From School

- **4th Grade Reading Loss:** Expect a **-34%** decline in Reading RIT Scores; equivalent to **6 months** of learning loss
- **6th Grade Math Loss:** Expect a **-81%** decline in Math RIT scores; equivalent to **14 months** of learning loss

Achievement Gap Expansion: COVID is expected to add **+20%** to gap between highest and lowest-performing students

Learning Recovery Time: Analysis of the Hurricane Katrina aftermath suggest a that **4 months' learning loss** requires **2 years** of normal seat time to fully recover academic pacing



Source: EAB Resources

What Can We Expect?

Addressing and Closing Learning Gaps & Social Emotional Supports

Committed to providing targeted academic and social-emotional interventions to our students

- Mastery Learning
- MTSS
 - Intensive Supports that are differentiated and individualized
 - Continued use of transition plans from summer into fall
- DL Team working with counselors, psychologists, social workers in collaboration with the Crisis Department to develop a support strategy for students and faculty



Current Status of Waukegan

- With approximately 16,000 students, our District is the largest in Lake County
- As a Unit District with students in grades PreK-12 we need to meet the needs of a large range of students
- Waukegan has been one of the communities hardest hit by COVID in Illinois, with 31% of Lake County cases, while only having 12% of the County's population.
- High concentration of Essential Workers





Community Engagement

Feedback from stakeholders was very important as we developed our plan. We used several methods to gather input, including:

- Surveys
- Live Video Sessions
- ThoughtExchange
- Focus Groups





Community Engagement - *Surveys*

- Surveys were sent to Waukegan Public Schools staff, students & parents. Nearly 4,000 responses were received
- Surveys asked respondents to share their thoughts on re-opening schools in the fall, and asked them to weigh in on various proposals





Community Engagement - *Virtual Meetings*

- In July we hosted two Virtual Informational Meetings on the Facebook Live platform to share details about our fall planning and to answer questions
- We had several hundred people watch the English and Spanish versions live, and nearly 14,000 people watched the two videos in total after they aired
- We were able to answer many questions during the sessions, and gathered more than 550 comments which have guided our planning





Community Engagement - *ThoughtExchange*

- ThoughtExchange is a new platform we used to crowdsource responses about what we need to keep in mind as we plan for the fall
- We had more than 2,600 participants provide us nearly 3,000 “thoughts” and these thoughts received more than 71,000 ratings from participants, which allowed us to identify the most common and popular themes





Community Engagement - *Focus Groups*

- In June and July we met in small focus groups with various stakeholders to hear different perspectives, and to see how we can work collaboratively
- Some of these groups included: Bargaining Units, Parents, Principals, Community Partners, District Leaders





Community Engagement - *What Did We Learn?*

- There is an across-the-board uneasiness about returning to classrooms in August due to perceived health risks - a lot of “what-ifs”
- There was interest in what steps the District is taking to enhance safety measures, and to maintain guidelines regarding social distancing and face coverings
- We heard from parents and staff about wanting to see a Remote Learning structure with more expectations
- A Hybrid learning plan, where students come to school in shifts, wh also participating in remote learning was popular





Student Learning Plan

Fall 2020





Impact Bargaining

- IS REQUIRED WHEN WORKING CONDITIONS ARE IMPACTED
- IS IN PROGRESS WITH AFFECTED UNIONS
- WILL LIKELY IMPACT FINALIZATION OF CERTAIN ASPECTS OF THIS PRESENTATION



Four Stage Plan

- For the fall we are planning to institute a Four Stage plan, which will gradually return students to in-person instruction as we work to meet the unique needs of our community
- Each stage will be evaluated for its effectiveness, and decisions to move from one stage to the next will be based upon health metrics, and guidance from health experts, as well as staffing & facility readiness
- Each stage will last a minimum of a three weeks, and no movement to the next stage will be made without 2 week notice

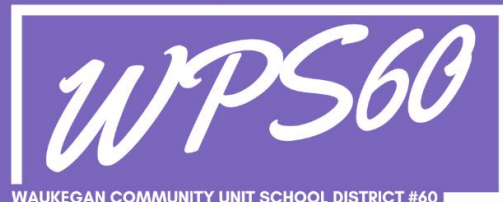


What are the Health Metrics?

- Staff and Student COVID Cases
- Total positive COVID cases in **Waukegan** zip codes (60079, 60085 & 60087) and in Lake County
- Daily infection rates in **Waukegan** and Lake County
- 7 day trends in **Waukegan** and Lake County
- Guidance and orders from Lake County Health Department and Illinois Department of Public Health



FOUR STAGE RETURN PLAN



Stage 1

REMOTE
INSTRUCTION FOR
ALL STUDENTS



Stage 2

MIX OF REMOTE
INSTRUCTION & IN-PERSON
LEARNING DEPENDING ON
STUDENT GRADE LEVEL



Stage 3

HYBRID MODEL FOR ALL
STUDENTS WITH A MIX OF
REMOTE INSTRUCTION &
IN-PERSON LEARNING



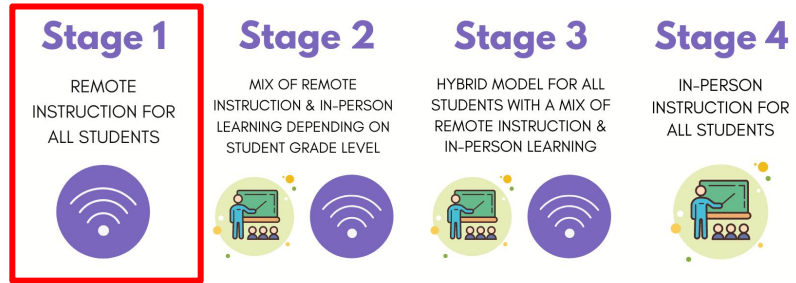
Stage 4

IN-PERSON
INSTRUCTION FOR
ALL STUDENTS



Stage 1

August 17- TBD



- Remote Instruction for **ALL students** begins on the first day of school - Monday, August 17



Remote Instruction -

What will it look like?

- In alignment with the Illinois State Board of Education (ISBE), the following is required of students:
 - Daily Attendance
 - Participation in ALL assigned learning activities
 - Earning of credits/grades



Remote Instruction - *Grading and Attendance*

- All students required to participate
- Printed packets will be available by request
 - Distribution and retrieval process will be facilitated by the Outreach Department
- Daily Attendance Mandatory
- **GRADING OF ASSIGNMENTS AND ASSESSMENTS**
BEGINS ON AUGUST 17



Remote Instruction -

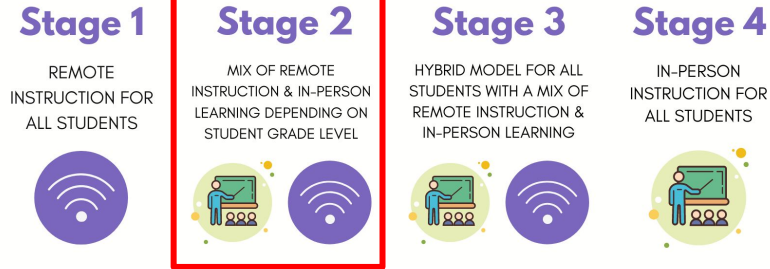
How will we support it?

- On demand professional development for staff members
- Online demonstrations and videos to support parents and students
- Learning packets will be provided to students new to the District until they receive their District-issued Chromebooks
- Provide additional technology to students where needed



Stage 2

Dates TBD



- Remote instruction for students in grades **4,5,6,7,8,9,10,11 and 12**
- In-person instruction for students in **PreK, Kindergarten,1,2,3, as well as “at-risk” students***
 - Students in these grades will attend school on Monday & Wednesday (A Shift) or Tuesday & Thursday (B Shift), with all students participating in Remote Instruction on Fridays (**Hybrid Plan**)

*Dependent on available staffing levels



Stage 2 - *Gradual Return*

Rationale of Selected Grades

A recent study published in the *Emerging Infectious Diseases Journal* concluded school closures likely helped slow the spread of infections

Researchers also noted **children under 10 transmitted the virus much less than adults**, but older children spread it at least as easily as adults did

Since schools were closed in the region at the time, though, experts were unable to assess how widely the virus might spread in classrooms





Stage 2 - *Gradual Return*

What students are considered at Risk?

“At-Risk” students **may** include those with IEP and 504 plans, EL students, homeless students and those in temporary living situations, and those that did not meet promotion policy criteria in previous school year



Stage 3

Dates TBD

Stage 1

REMOTE
INSTRUCTION FOR
ALL STUDENTS



Stage 2

MIX OF REMOTE
INSTRUCTION & IN-PERSON
LEARNING DEPENDING ON
STUDENT GRADE LEVEL



Stage 3

HYBRID MODEL FOR ALL
STUDENTS WITH A MIX OF
REMOTE INSTRUCTION &
IN-PERSON LEARNING



Stage 4

IN-PERSON
INSTRUCTION FOR
ALL STUDENTS



- In person instruction for **ALL** Grades using the Hybrid Model
- Students will attend school in shifts, either on Monday & Wednesday (A Shift) or Tuesday & Thursday (B Shift), with all students participating in Remote Instruction on Fridays



Stage 2 & 3 Hybrid Plan - *Basic Overview*

- Reduced class sizes
- Full days of attendance
- When students are not physically in school then they are engaging in Remote Learning from home
- Remote Instruction on Fridays for all students
- Students will be assigned to one of the two shifts alphabetically, with every effort being made to ensure siblings are in the same shift
- Limited extracurricular activities



Hybrid Plan

Additional Details

- Through a **Blended Learning** approach, teachers will introduce topics and skills in person
 - Modeling
 - Differentiating supports
- Students are given the opportunity to continue the engagement using their Chromebooks to conduct research, practice skills, collaborate with classmates, and record their findings and responses to assignments.



Stage 4

Dates TBD

Stage 1

REMOTE
INSTRUCTION FOR
ALL STUDENTS



Stage 2

MIX OF REMOTE
INSTRUCTION & IN-PERSON
LEARNING DEPENDING ON
STUDENT GRADE LEVEL



Stage 3

HYBRID MODEL FOR ALL
STUDENTS WITH A MIX OF
REMOTE INSTRUCTION &
IN-PERSON LEARNING



Stage 4

IN-PERSON
INSTRUCTION FOR
ALL STUDENTS



- In person instruction for all grades Monday through Friday
- Would most closely resemble structure prior to schools closing in March
- Several enhanced safety and sanitation measures would remain in place
- Resumption of most extracurricular activities





Health, Safety, Structures and Enhanced Measures



Guiding Documents

Waukegan
Public Schools
Fall 2020
Reopening
Plan



ISBE & IDPH
Starting the
2020-21
School Year
Joint Guidance



In-Person Alternatives for Students

We understand there are students at higher risk of severe illness and a delayed return remains their only option

- All parents may request to have their children continue with Remote Learning until they feel it is appropriate for their child to return to in-person instruction
 - Parents/ guardians need to notify their child's school of their intent to continue Remote Instruction from home and to develop a plan
 - Review of plans would correlate with progression of Stages





Family First Coronavirus Response Act

- Staff members requesting an ADA reasonable accommodation should contact Human Resources
- Requests for accommodations will be considered on an individualized basis
- Request must be related to a need directly impacting the employee's ability to perform the expectations of the employee's job duties



Screenings

ISBE requires that schools conduct symptom screenings and temperature checks or require that individuals self-certify that they are free of symptoms before entering school buildings

- Building-by-building plan to ensure anyone entering our buildings has been screened daily to ensure the safety of everyone
- District wide screening standards to be used across buildings, consistent with public health authority guidelines and District Policy
- Gathering input from bargaining units is crucial in this planning



Quarantine Protocols

- A person can test negative for COVID-19 one day, be around someone who is exposed the next day and then be subject to quarantine protocols.
- A person who presents with only a fever must not return until fever free for 72 hours without taking any fever reducing medication.
- A person who has tested positive for COVID-19 must self quarantine for at least 14 days, the cough and shortness of breath must be resolved with any other symptoms improving and no fever for at least three days prior to returning to work.
- A person who is directly exposed to a COVID-19 positive person must self quarantine for 14 days and monitor symptoms.
- Those who have had contact with someone possibly exposed must be self-quarantined for 7 days and monitor symptoms.



Impact Investigation

- District Lead Nurses and Health Services Coordinator certified to be Contact Tracers (Building Impact Investigators)
- Assess impact levels for affected individuals and building
- Advance to the Pandemic Preparedness Team with recommendations
 - Communications, Human Resources, Principal, Nurse Coordinator, Legal & Operations
 - Consistent with our Contagious Infectious Disease Policies
 - Policy 6034 (Students), Policy 4201 (Personnel)



Face Coverings

Expectations

- District will provide a reusable facemask to all staff and students
- Students and staff may also provide and wear their own
- Face covering will be required to be worn by all persons when:
 - Entering and while in buildings
 - Riding bus transportation
 - Participating in approved after school sponsored activities
- Face coverings may be removed for purposes of eating or drinking, provided social distancing can be maintained



Face Coverings

Exceptions

Exceptions to the requirement for face coverings are allowed for:

- Verified medical reasons*
- Persons under the age of 2
- When an individual is unconscious or other health emergency
- When students are actively participating in athletic activities, consistent with guidelines of State or federal public health officials

**Requests for recognition of a medical exception will be handled as a request for a reasonable accommodation of a disability and should be referred to the school nurse, for students, and the Department of Human Resources for employees.*





Social Distancing

In Buildings & Classrooms & Outdoors

- A general six-foot rule for purposes of social distancing for both indoor and outdoor activities, whenever practicable
- The number of desks in classrooms will be reduced to ensure they are properly spaced apart
- Groups in an indoor or outdoor space may not exceed the number set forth by the phase of the Restore Illinois Plan that is applicable to Waukegan, and social distancing between groups must comply with those requirements
- Use of playground equipment will not be permitted





Limiting Student Movement

- Cafeterias will not be used for breakfast and lunch in an effort to promote social distancing. Instead, meals will be served in the classroom. No outside food will be permitted for students
- Encore classes at the elementary level will be held in classrooms to reduce traffic flow
- We are exploring options to limit students' movements at the middle school and high school levels, based upon discussions with the teachers' union
- Principals are creating building-specific plans to address arrival, dismissal and traffic flow within buildings





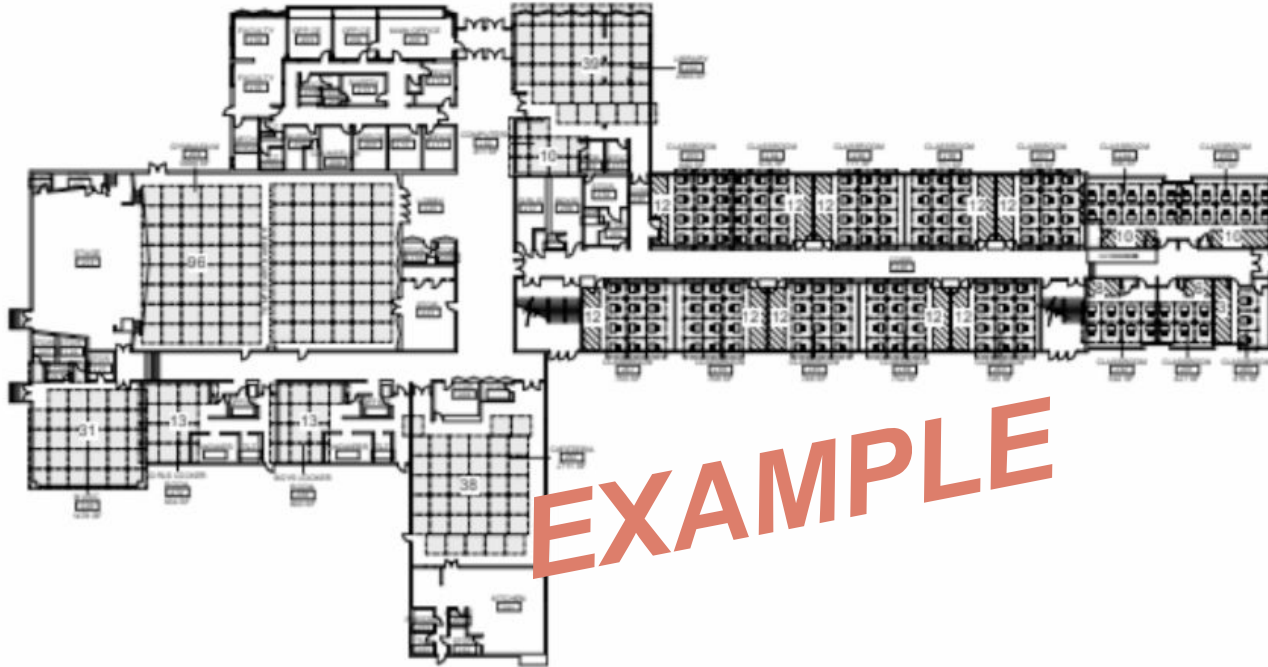
School Occupancy Plans

- Space Utilization analysis conducted for each school unit
 - Reports provided to each building principal
 - Room utilization plans currently in development
- Individual student/staff spacing with minimum 6 ft spacing
- Hallway traffic flow
- Student line up for entry and dismissal
- Water fountain locations
- Handwashing and hand sanitizer locations



Occupancy Plans

Classroom Layouts



EXAMPLE





Enhanced Sanitation Measures

- Buildings have enhanced cleaning and disinfecting measures in consideration of recommendations and guidance from health experts
- More deliberate efforts are taken to clean areas such as touchpoints, restrooms, and high traffic areas
- Hand sanitizer dispensers are more readily available in our buildings
- Individual disinfectant bottles are being made available for staff use in classrooms and offices





Enhanced Sanitation Measures

(cont.)

- Restrict water fountain usage in our buildings, except for bottle fillers
- Provide safe drinking water options where necessary
- Increase air movement and filtration in occupied spaces
- There will be increased opportunities for frequent hand washing during the day





Transportation

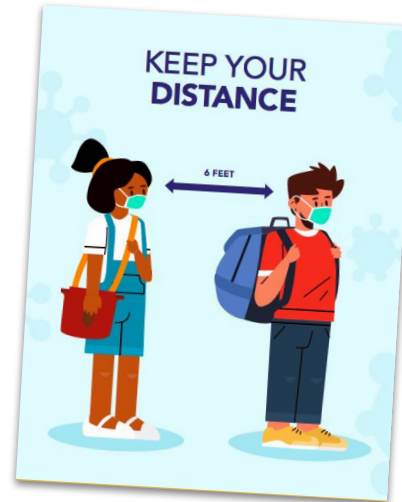
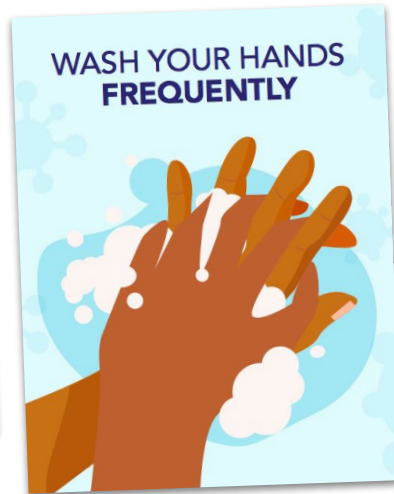
Parents are encouraged to transport children to and from school when possible

- Face coverings will be required
- Bus Routes and Schedules will remain the same
- Capacity - 24 occupancy on school buses
- PACE - 15 occupancy
- Pay to Ride will be suspended until stage 4



Signage

All District buildings will feature increased signage related to COVID-19 regarding guidelines and best practices





What's Next?





Registration & Open Houses

- Families new to the District can begin the registration process online
- Returning students that were not registered in the Spring can be registered in school buildings when staff return early next month
- Principals are in the process of creating plans for open houses for families





Informational Sessions

On Monday, July 27 we will host two live video information sessions, where staff, parents and students will have an opportunity to ask questions about the plan using the District's Facebook and YouTube platforms

- English language broadcast will begin at 4:00 p.m.
- Spanish language broadcast will begin at 5:30 p.m.



end

